

Consultancy Services for Carrying out Feasibility Study, Preparation of Detailed Project Report and providing pre-construction services in respect of 2 laning with paved shoulder of *Imphal-Jiribam section of NH-37 (NH-53)* (length- 220 Km) in the State of Manipur (PKG NO. NHIDCL/DPR/CT-IJ-TP/Manipur/2017)

Package-I

Design Ch. Km-3.275 to Km-15.940
Survey Ch. Km-3.275 to Km-15.946



Draft Detailed Project Report Volume-IX Drawing

**National Highways & Infrastructure
Development Corporation Ltd.**
PTI Building, 3rd Floor, 4, Parliament Street,
New Delhi-110001



C. E. Testing Company Pvt. Ltd.
124-A, NSC Bose Road, Kolkata -92

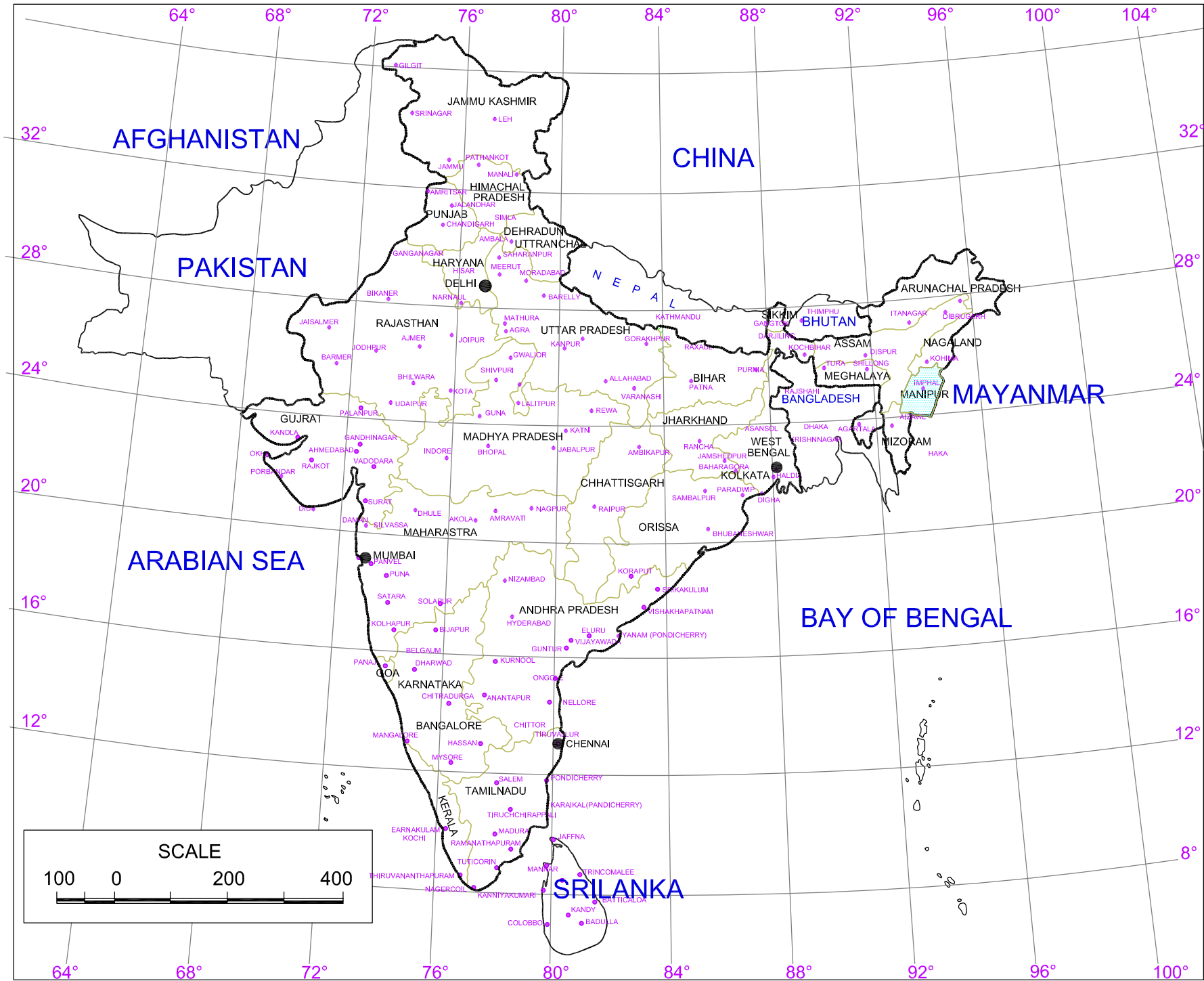
CONTENT

IMPHAL-JIRIBAM_PKG-I

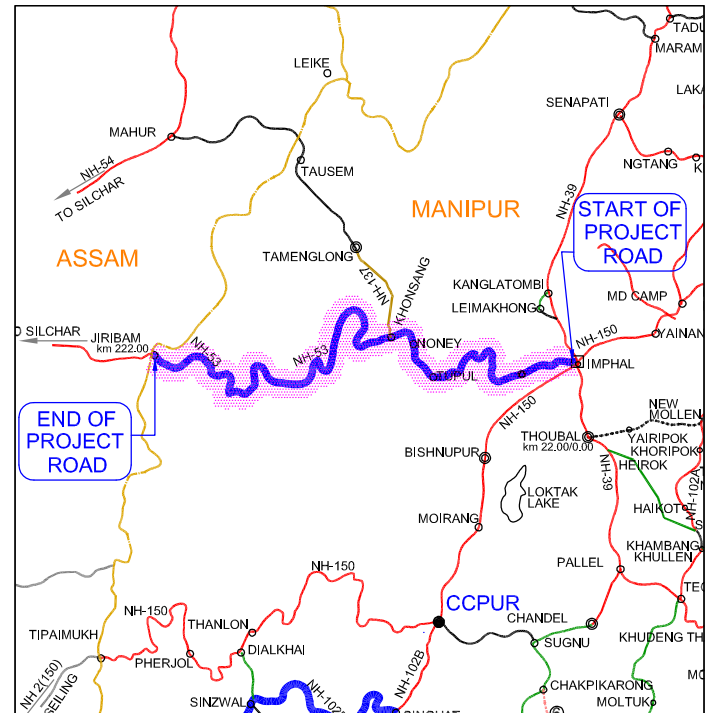
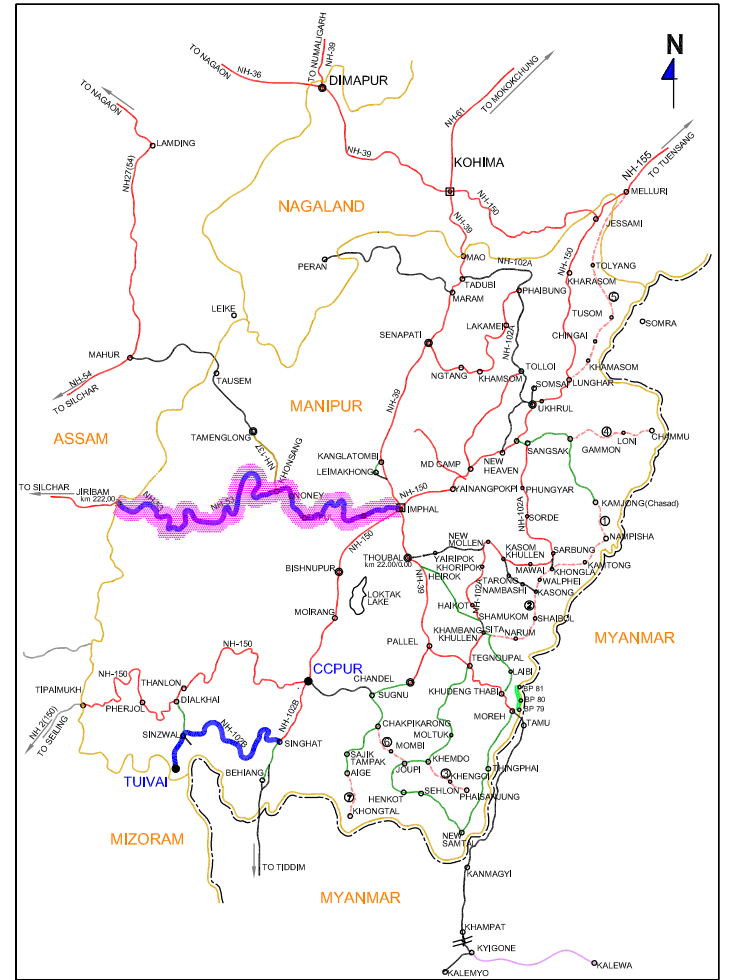
DESIGN CHAINAGE : KM. 3+275 - KM. 15+940

SL. NO	TITLE OF DRAWINGS	DRAWING NO.	NO. OF SHEETS
01	LOCATION PLAN	DWG NO :-CET/4047/NHIDCL/NH-37/I-J/DDPR/LP	01
02	TYPICAL CROSS SECTION	DWG NO :-CET/4047/NHIDCL/NH-37/I-J/DDPR/TCS	02
03	PLAN & PROFILE	DWG NO :-CET/4047/NHIDCL/NH-37/I-J/DDPR/PP	13
04	HORIZONTAL ALIGNMENT REPORT	DWG NO :-CET/4047/NHIDCL/NH-37/I-J/DDPR/HAR	03
05	VERTICAL ALIGNMENT REPORT	DWG NO :-CET/4047/NHIDCL/NH-37/I-J/DDPR/VAR	01

LOCATION PLAN

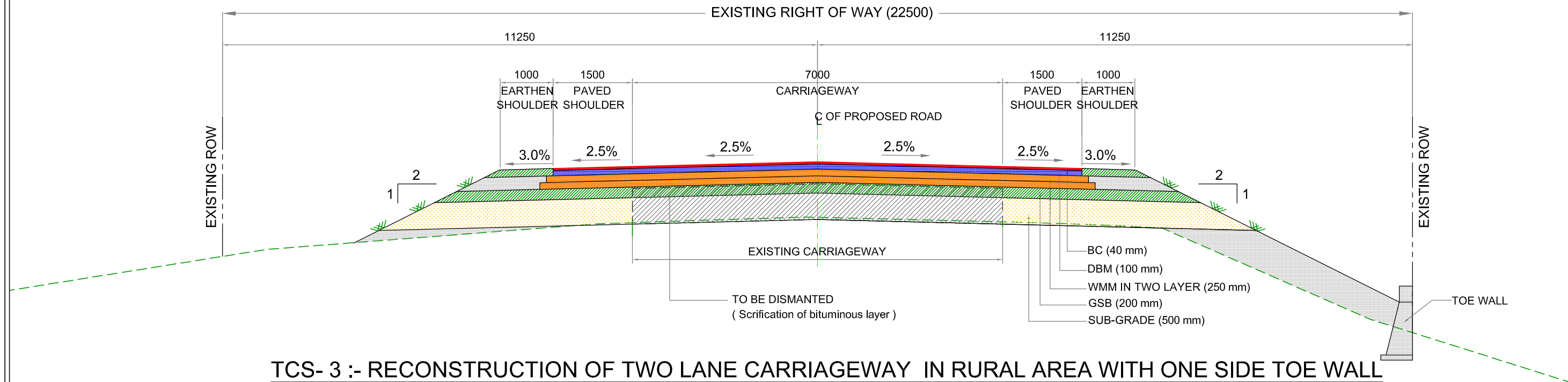


LOCATION MAP











					Scale :- N.T.S		CLIENT: NATIONAL HIGHWAYS AND INFRASTRUCTURE DEVELOPMENT CORPORATION LTD. PTI Building, 3rd Floor, 4, Parliament Street, New Delhi - 110001		TITLE : LOCATION PLAN		CONSULTANT : CE TESTING COMP. 124-A, N.S.C.I. Kolkata - 700 092		DWG NO :- CET/4047/NHIDCL/NH-37/I-I/DDPR/LP			
					DATE: DEC, 2020		PROJECT: CONSULTANCY SERVICES FOR CARRYING OUT FEASIBILITY STUDY, PREPARATION OF DETAILED PROJECT REPORT AND PROVIDING PRE-CONSTRUCTION SERVICES IN RESPECT OF 2 LANING WITH PAVED SHOULDER OF IMPHAL-JIRIBAM SECTION OF NH-37 (NH-53) (LENGTH- 220 KM) IN THE STATE OF MANIPUR		SUBMISSION TYPE : DRAFT DETAILED PROJECT REPORT		PACKAGE - I		REVISION MKD. - R2		SHEET NO. - 01	
MKD.	DATE	DESCRIPTION	CHKD.	APPRD.									Drawn By.	Designed By.	Checked By.	Issued By.
REVISIONS													P.GHOSH	B.DAS	S.SADHU	A.K.DAS

TYPICAL CROSS SECTION

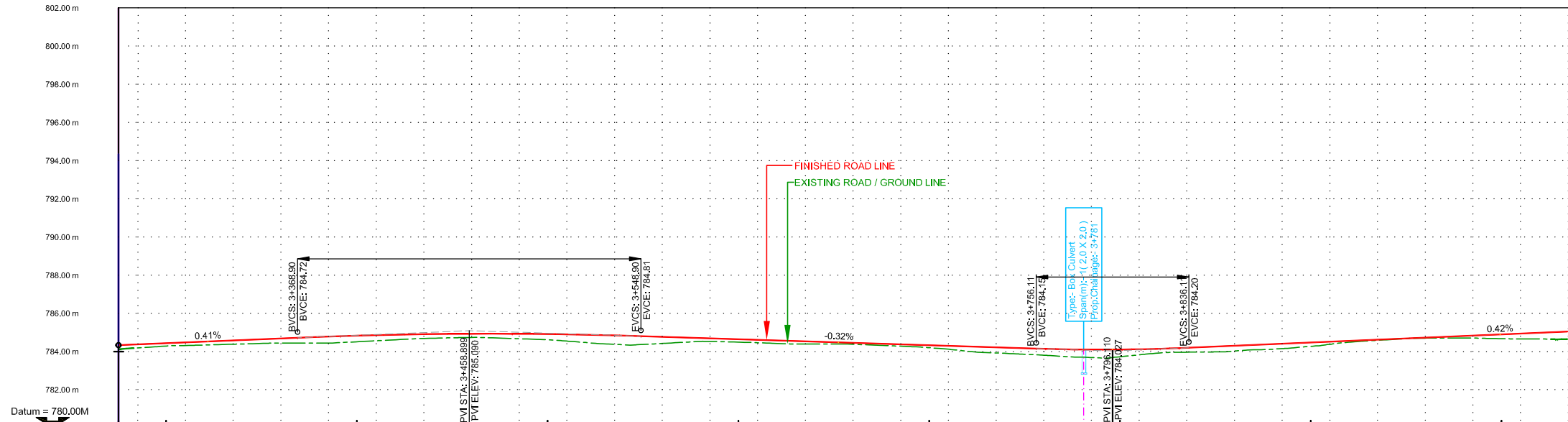
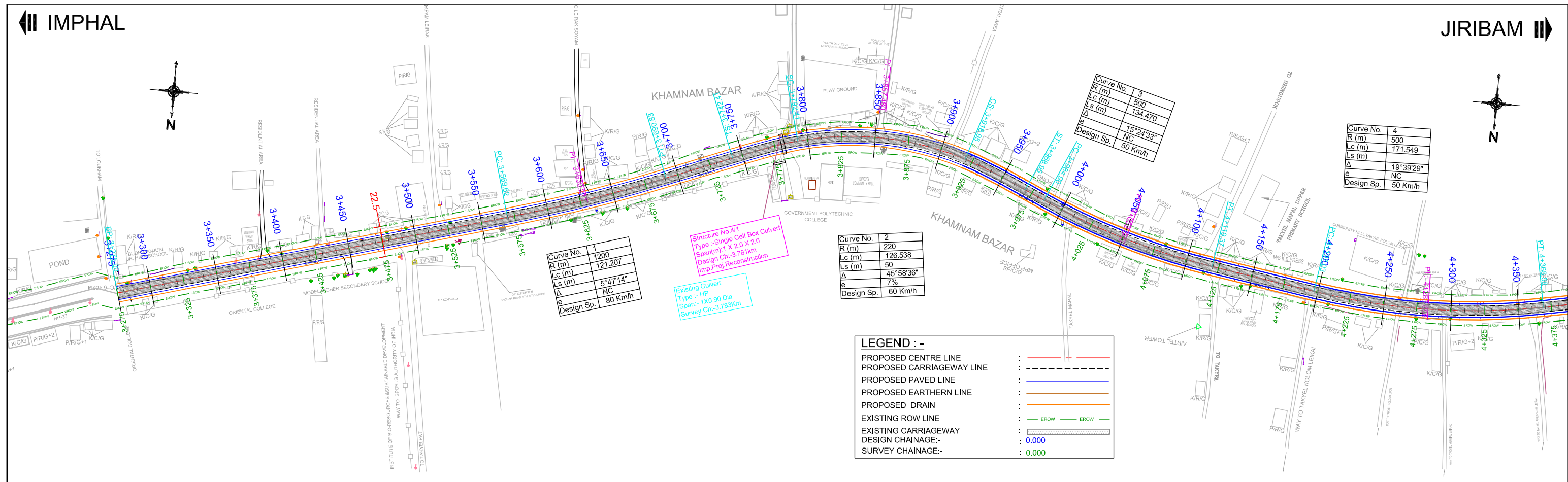


TCS- 3 :- RECONSTRUCTION OF TWO LANE CARRIAGEWAY IN RURAL AREA WITH ONE SIDE TOE WALL

Chainage (m)		CD Length (m)	Net Length (m)	TCS Type
From	To			
3275	5700	16.94	2408.06	TCS-1
5700	7500	18.5	1781.5	TCS-2
7500	8400	7.9	892.1	TCS-1
8400	8900	23.7	476.3	TCS-2
8900	8980		80	TCS-3
8980	9150	2.6	167.4	TCS-2
9150	9400		250	TCS-1
9400	10200	10.5	789.5	TCS-2
10200	10250		50	TCS-3
10250	11850	15.82	1584.18	TCS-2
11850	12375	2.6	522.4	TCS-1
12375	12700	5.3	319.7	TCS-2
12700	13125	16.4	408.6	TCS-1
13125	15940	48.26	2766.74	TCS-2
Total =		169	12496	

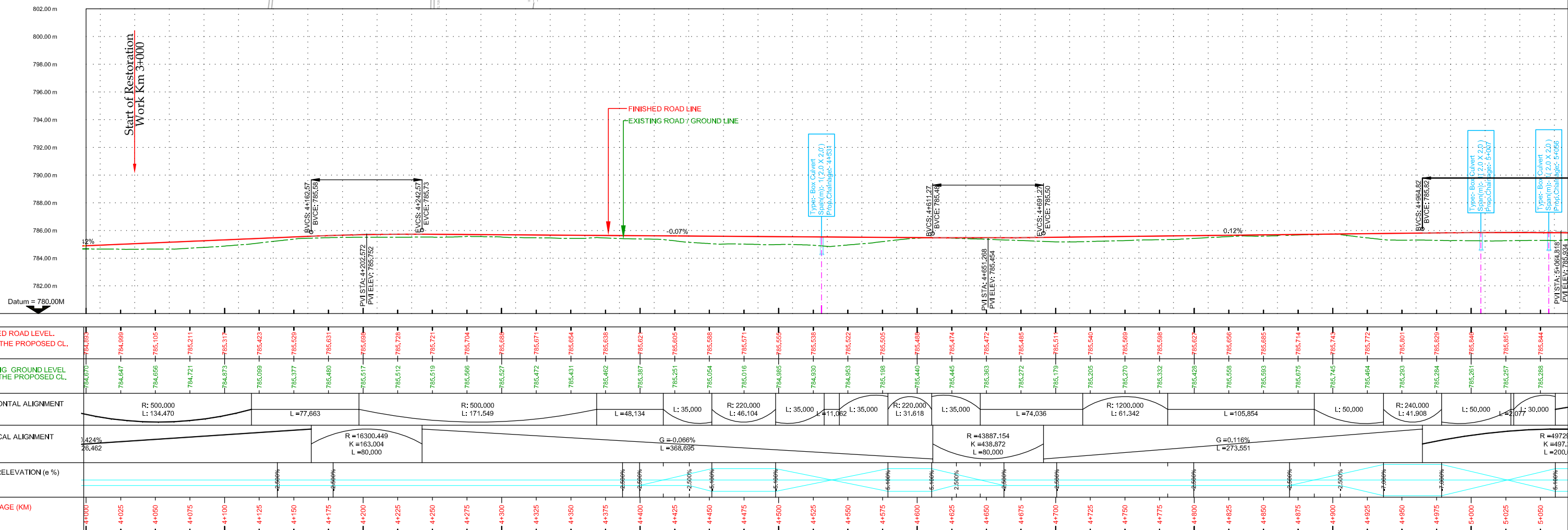
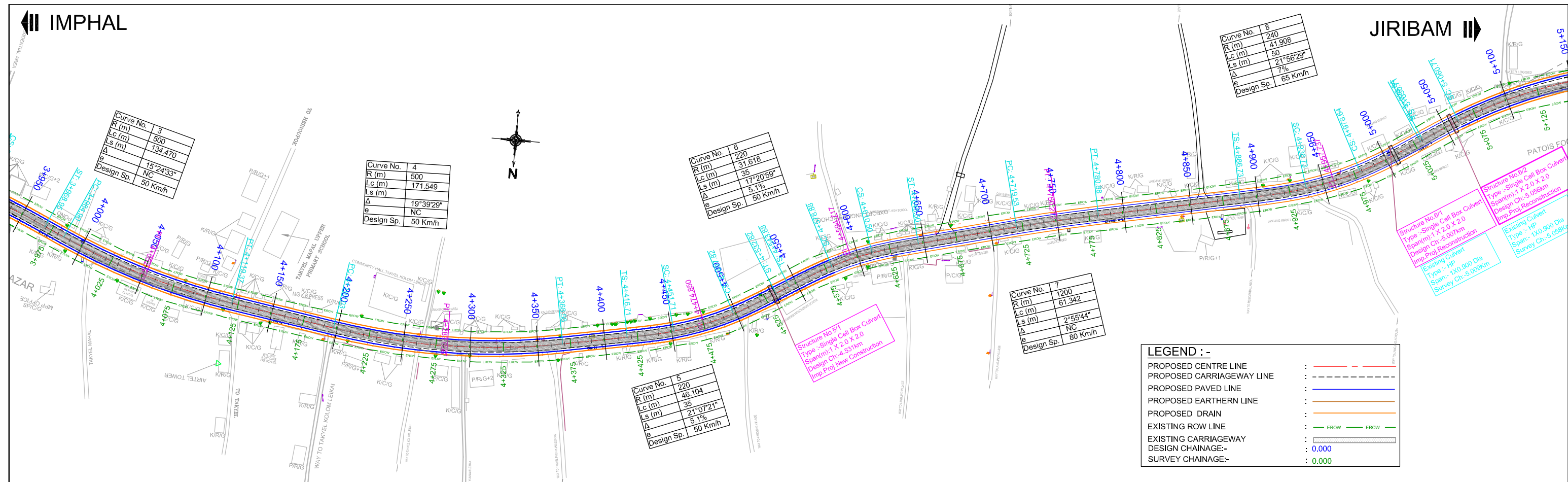
					Scale :- 1 : 75		CLIENT: NATIONAL HIGHWAYS AND INFRASTRUCTURE DEVELOPMENT CORPORATION LTD. PTI Building, 3rd Floor, 4, Parliament Street, New Delhi - 110001	TITLE : TYPICAL CROSS SECTION	CONSULTANT :  CE TESTING COMPANY PVT. LTD. 124-A, N.S.C. Bose Road Kolkata - 700092.	DWG NO :-CET/4047/NHIDCL/NH-37/I-J/DDPR/TCS			
					DATE: DEC, 2020		PROJECT: CONSULTANCY SERVICES FOR CARRYING OUT FEASIBILITY STUDY, PREPARATION OF DETAILED PROJECT REPORT AND PROVIDING PRE-CONSTRUCTION SERVICES IN RESPECT OF 2 LANING WITH PAVED SHOULDER OF IMPHAL-JIRIBAM SECTION OF NH-37 (NH-53) (LENGTH- 220 KM) IN THE STATE OF MANIPUR	SUBMISSION TYPE : DRAFT DETAIL PROJECT REPORT		REVISION MKD. - R2		SHEET NO. - 02	
										Drawn By	Designed By	Checked By	Issued By
REVISIONS										 P.GHOSH	 B. DAS	 S. SADHU	 A. K.DAS

PLAN & PROFILE

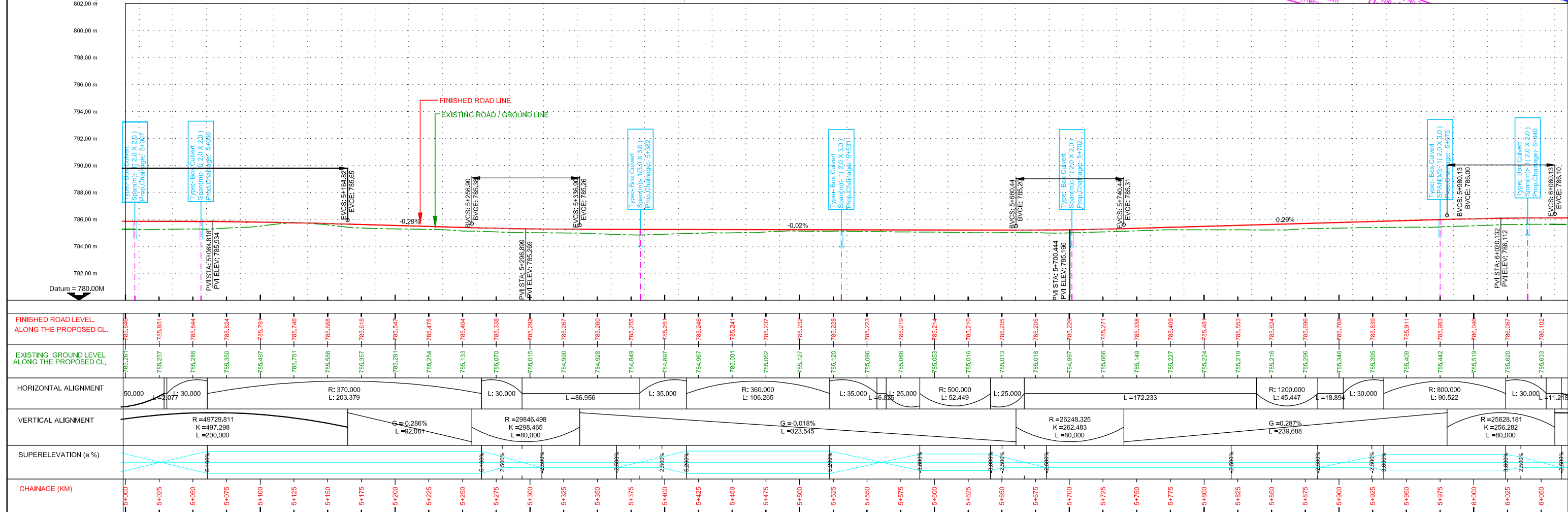
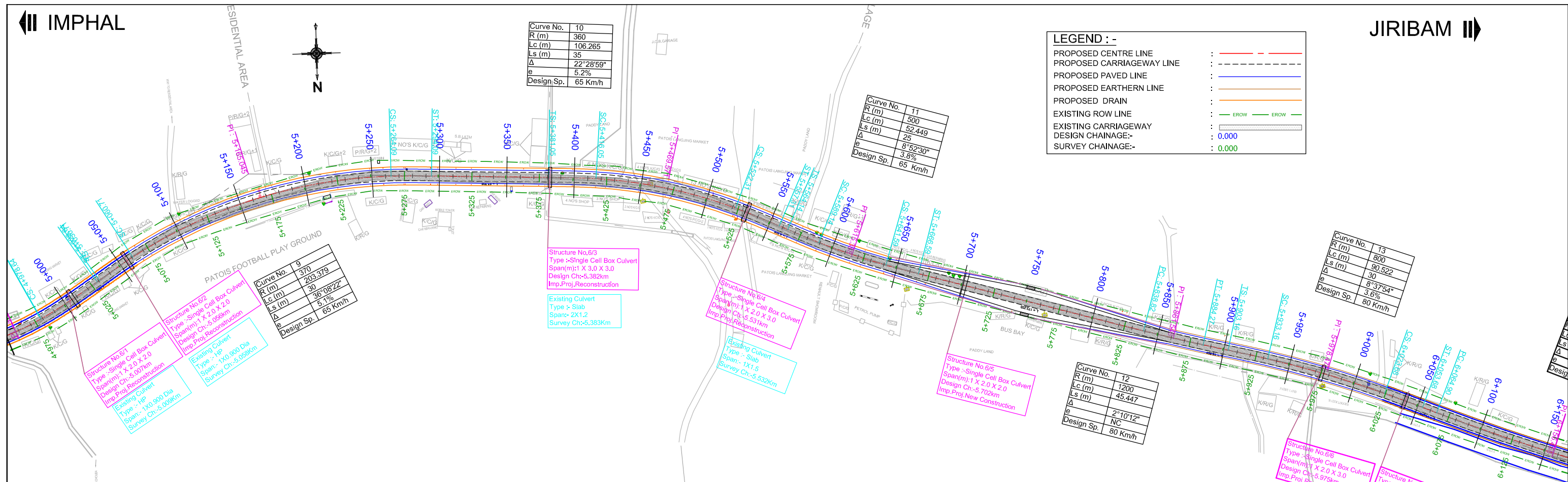


FINISHED ROAD LEVEL. ALONG THE PROPOSED CL.	784.331	784.434	784.537	784.641	784.743	784.827	784.887	784.920	784.929	784.912	784.870	784.803	784.724	784.645	784.567	784.488	784.409	784.330	784.251	784.173	784.110	784.104	784.156	784.256	784.302	784.409	784.469	784.574	784.680	784.787	784.893	784.989																																						
EXISTING GROUND LEVEL ALONG THE PROPOSED CL.	784.723	784.284	784.353	784.423	784.440	784.510	784.639	784.717	784.703	784.613	784.425	784.387	784.500	784.490	784.405	784.390	784.320	784.199	783.966	783.854	783.711	783.723	783.851	783.977	784.089	784.271	784.521	784.678	784.680	784.708	784.670	784.647																																						
HORIZONTAL ALIGNMENT	L = 294.622										R: 1200.000 L: 121.207										L = 51.579										L: 50,000										R: 220.000 L: 126.538										L: 50,000										L = 15,932									
VERTICAL ALIGNMENT	G = 0.413% L = 93.899										R = 24725.075 K = 247.251 L = 180.000										G = 0.315% L = 207.211										R = 10816.921 K = 108.169 L = 80,000										G = 0.424% L = 326.462																													
SUPERELEVATION (e %)																																																																						
CHAINAGE (KM)	3+275	3+300	3+325	3+350	3+375	3+400	3+425	3+450	3+475	3+500	3+525	3+550	3+575	3+600	3+625	3+650	3+675	3+700	3+725	3+750	3+775	3+800	3+825	3+850	3+875	3+900	3+925	3+950	3+975	4+000	4+025																																							

					Scale :- H - 1:2500 V - 1:250		CLIENT: NATIONAL HIGHWAYS AND INFRASTRUCTURE DEVELOPMENT CORPORATION LTD. PTI Building, 3rd Floor, 4, Parliament Street, New Delhi - 110001	TITLE: PLAN & PROFILE Km 3+275 to Km 4+000	CONSULTANT: CE TESTING COMPANY PVT. LTD. 124-A, N.S.C. Bose Road, Kolkata - 700092.	DWG NO :-CET/4047/NHIDCL/NH-37/I-J/DDPR/PP			
					DATE: DEC, 2020	PROJECT: CONSULTANCY SERVICES FOR CARRYING OUT FEASIBILITY STUDY, PREPARATION OF DETAILED PROJECT REPORT AND PROVIDING PRE-CONSTRUCTION SERVICES IN RESPECT OF 2 LANING WITH PAVED SHOULDER OF IMPHAL-JIRIBAM SECTION OF NH-37 (NH-53) (LENGTH- 220 KM) IN THE STATE OF MANIPUR	SUBMISSION TYPE: DRAFT DETAIL PROJECT REPORT			REVISION MKD. - R2		SHEET NO. - 01	
MKD.	DATE	DESCRIPTION	CHKD.	APPRD.						Drawn By	Designed By	Checked By	Issued By
		REVISIONS						(PACKAGE NO. I)		P.GHOSH	B.DAS	S.SADHU	A.K.DAS



					Scale :- H -1:2500 V -1:250		CLIENT: NATIONAL HIGHWAYS AND INFRASTRUCTURE DEVELOPMENT CORPORATION LTD. PTI Building, 3rd Floor, 4, Parliament Street, New Delhi - 110001	TITLE : PLAN & PROFILE Km 4+000 to Km 5+000	CONSULTANT :  CE TESTING COMPANY PVT. LTD. 124-A, N.S.C Bose Road, Kolkata - 700092.	DWG NO :-CET/4047/NHIDCL/NH-37/I-J/DDPR/PP
										REVISION MKD. - R2 SHEET NO. - 02
MKD.	DATE	DESCRIPTION	CHKD.	APPRD.	DATE: DEC, 2020	PROJECT: CONSULTANCY SERVICES FOR CARRYING OUT FEASIBILITY STUDY, PREPARATION OF DETAILED PROJECT REPORT AND PROVIDING PRE-CONSTRUCTION SERVICES IN RESPECT OF 2 LANING WITH PAVED SHOULDER OF IMPHAL-JIRIBAM SECTION OF NH-37 (NH-53) (LENGTH- 220 KM) IN THE STATE OF MANIPUR	SUBMISSION TYPE : DRAFT DETAIL PROJECT REPORT	(PACKAGE NO. I)		Drawn By Designed By Checked By Issued By
REVISONS										P.Ghosh B.DAS S. SADHU A.K.DAS



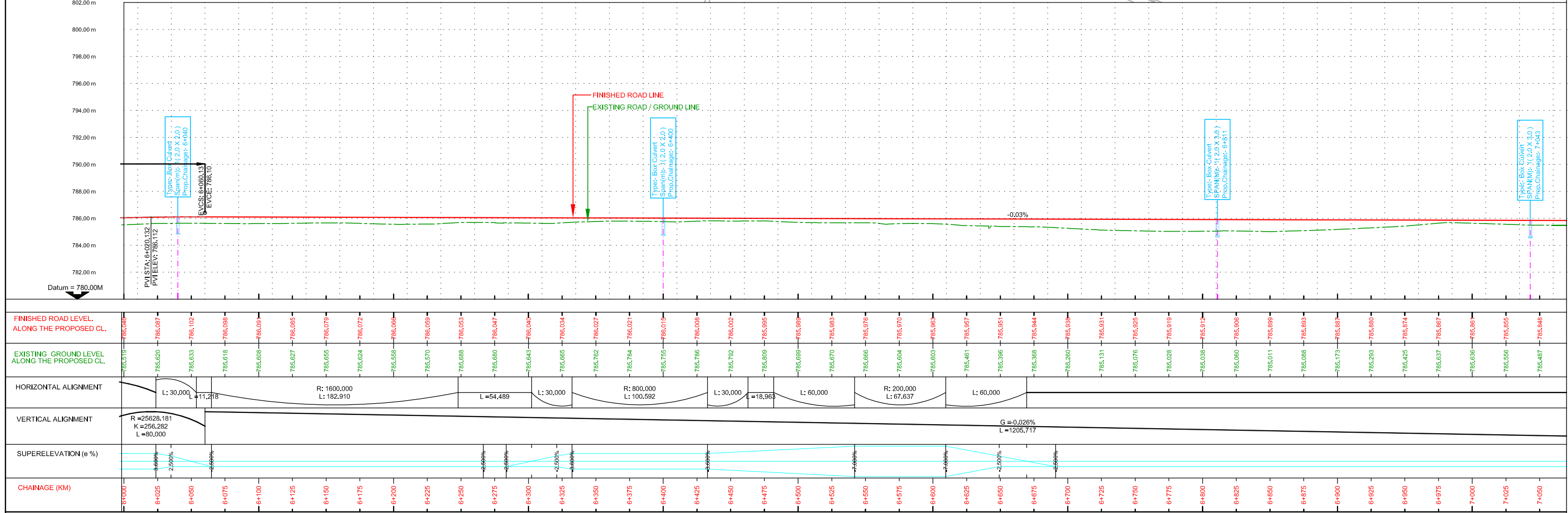
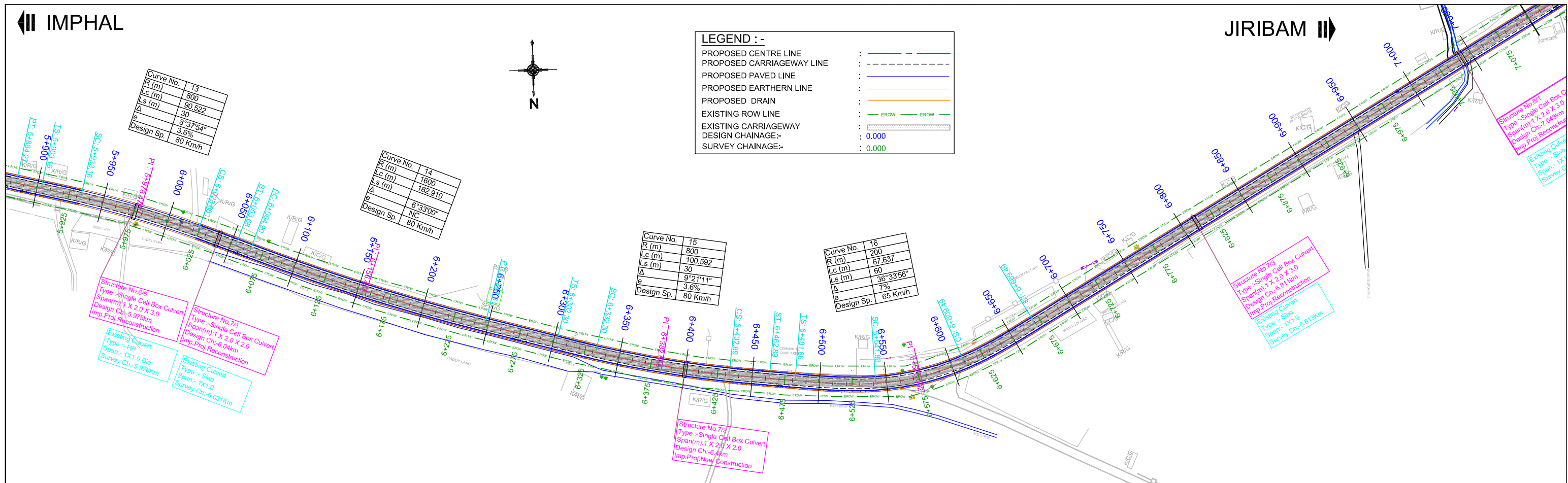
Scale :- H - 1:2500 V - 1:250					CLIENT: NATIONAL HIGHWAYS AND INFRASTRUCTURE DEVELOPMENT CORPORATION LTD. PTI Building, 3rd Floor, 4, Parliament Street, New Delhi - 110001					TITLE: PLAN & PROFILE Km 5+000 to Km 6+000					CONSULTANT: CE TESTING COMPANY PVT. LTD. 124-A, N.S.C. Bose Road, Kolkata - 700092.					DWG NO :- CET/4047/NHIDCL/NH-37/I-J/DDPR/PP				
DATE: DEC, 2020					PROJECT: CONSULTANCY SERVICES FOR CARRYING OUT FEASIBILITY STUDY, PREPARATION OF DETAILED PROJECT REPORT AND PROVIDING PRE-CONSTRUCTION SERVICES IN RESPECT OF 2 LANING WITH PAVED SHOULDER OF IMPHAL-JIRIBAM SECTION OF NH-37 (NH-53) (LENGTH- 220 KM) IN THE STATE OF MANIPUR					SUBMISSION TYPE: DRAFT DETAIL PROJECT REPORT (PACKAGE NO. I)					REVISION MKD. - R2					SHEET NO. - 03				
REVISIONS					MKD.					DATE					DESCRIPTION					CHKD.				
APPRD.					P.GHOSH					B.DAS					S.SADHU					A.K.DAS				

IMPHAL

JIRIBAM

LEGEND :-

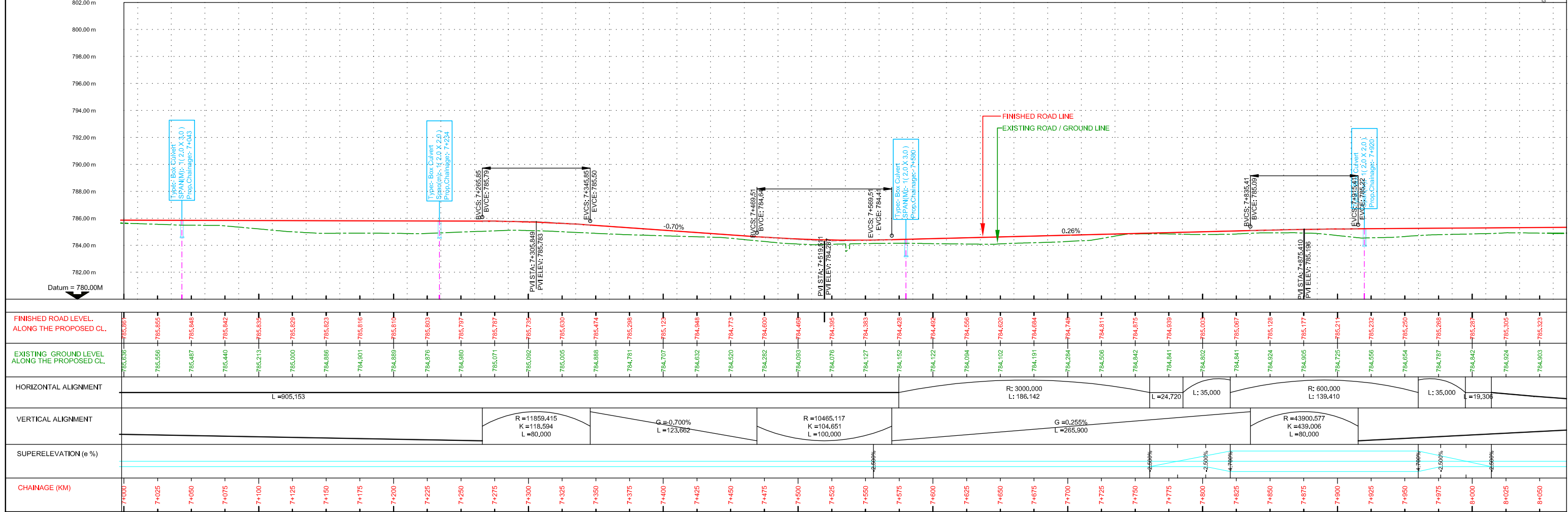
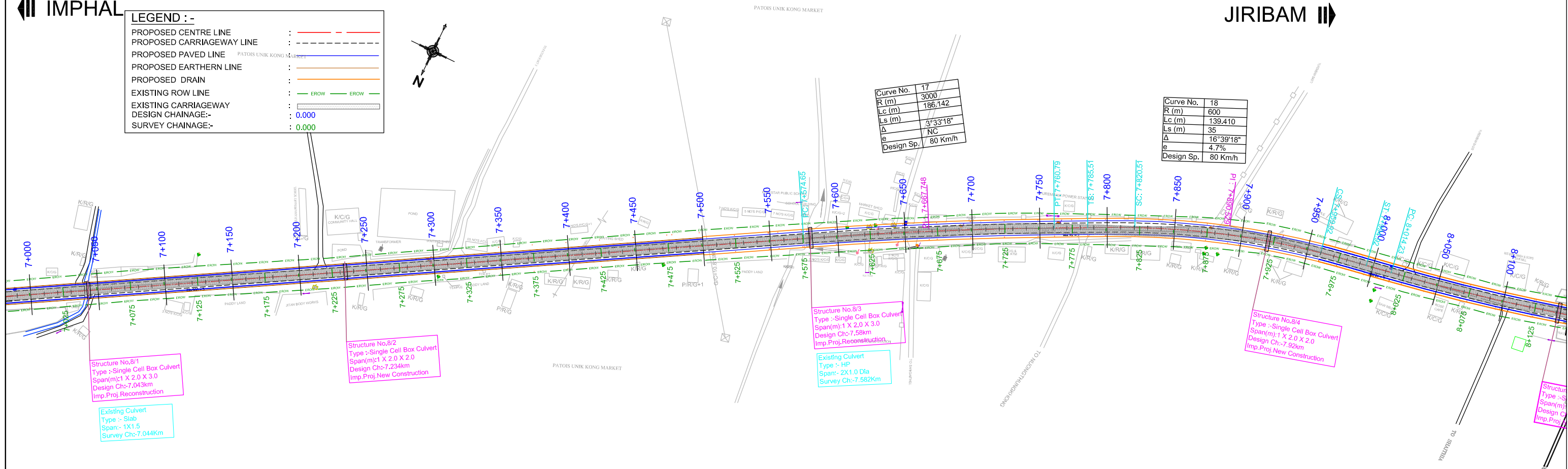
PROPOSED CENTRE LINE	---
PROPOSED CARRIAGEWAY LINE	----
PROPOSED PAVED LINE	----
PROPOSED EARTHEN LINE	----
PROPOSED DRAIN	----
EXISTING ROW LINE	---
EXISTING CARRIAGEWAY	----
DESIGN CHAINAGE:-	0.000
SURVEY CHAINAGE:-	0.000



Scale :- H -1:2500 V -1:250					CLIENT: NATIONAL HIGHWAYS AND INFRASTRUCTURE DEVELOPMENT CORPORATION LTD. PTI Building, 3rd Floor, 4, Parliament Street, New Delhi - 110001					TITLE : PLAN & PROFILE Km 6+000 to Km 7+000					CONSULTANT : CE TESTING COMPANY PVT. LTD. 124-A, N.S.C. Bose Road, Kolkata - 700092.					DWG NO :-CET/4047/NHIDCL/NH-37/I-J/DDPR/PP				
DATE: DEC, 2020					PROJECT: CONSULTANCY SERVICES FOR CARRYING OUT FEASIBILITY STUDY, PREPARATION OF DETAILED PROJECT REPORT AND PROVIDING PRE-CONSTRUCTION SERVICES IN RESPECT OF 2 LANING WITH PAVED SHOULDER OF IMPHAL-JIRIBAM SECTION OF NH-37 (NH-53) (LENGTH- 220 KM) IN THE STATE OF MANIPUR					SUBMISSION TYPE : DRAFT DETAIL PROJECT REPORT (PACKAGE NO. I)					REVISION MKD. - R2					SHEET NO. - 04				
REVISIONS					MKD.					DATE					DESCRIPTION					CHKD.				
APPRD.					P.GHOSH					B.DAS					S.SADHU					A.K.DAS				



LEGEND :-	
PROPOSED CENTRE LINE	---
PROPOSED CARRIAGEWAY LINE	---
PROPOSED PAVED LINE	---
PROPOSED EARTHEN LINE	---
PROPOSED DRAIN	---
EXISTING ROW LINE	---
EXISTING CARRIAGEWAY	---
DESIGN CHAINAGE:-	0.000
SURVEY CHAINAGE:-	0.000



Scale :- H - 1:2500 V - 1:250					CLIENT: NATIONAL HIGHWAYS AND INFRASTRUCTURE DEVELOPMENT CORPORATION LTD. PTI Building, 3rd Floor, 4, Parliament Street, New Delhi - 110001					TITLE: PLAN & PROFILE Km 7+000 to Km 8+000					CONSULTANT: CE TESTING COMPANY PVT. LTD. 124-A, N.S.C. Bose Road, Kolkata - 700092.					DWG NO :-CET/4047/NHIDCL/NH-37/I-J/DDPR/PP				
DATE: DEC, 2020					PROJECT: CONSULTANCY SERVICES FOR CARRYING OUT FEASIBILITY STUDY, PREPARATION OF DETAILED PROJECT REPORT AND PROVIDING PRE-CONSTRUCTION SERVICES IN RESPECT OF 2 LANING WITH PAVED SHOULDER OF IMPHAL-JIRIBAM SECTION OF NH-37 (NH-53) (LENGTH- 220 KM) IN THE STATE OF MANIPUR					SUBMISSION TYPE: DRAFT DETAIL PROJECT REPORT (PACKAGE NO. I)					REVISION MKD. - R2					SHEET NO. - 05				
REVISIONS					MKD.					DATE					DESCRIPTION					CHKD.				
APPRD.					P.GHOSH					B.DAS					S.SADHU					A.K.DAS				